

Assignment 1 by  
Duyen Nguyen

## **BODY & PERCEPTION**

Plaster Gauze

## **CLOTHING & IDENTITY**

Textiles

IRH 401 Fall 2019  
Professor Lois Weinthal





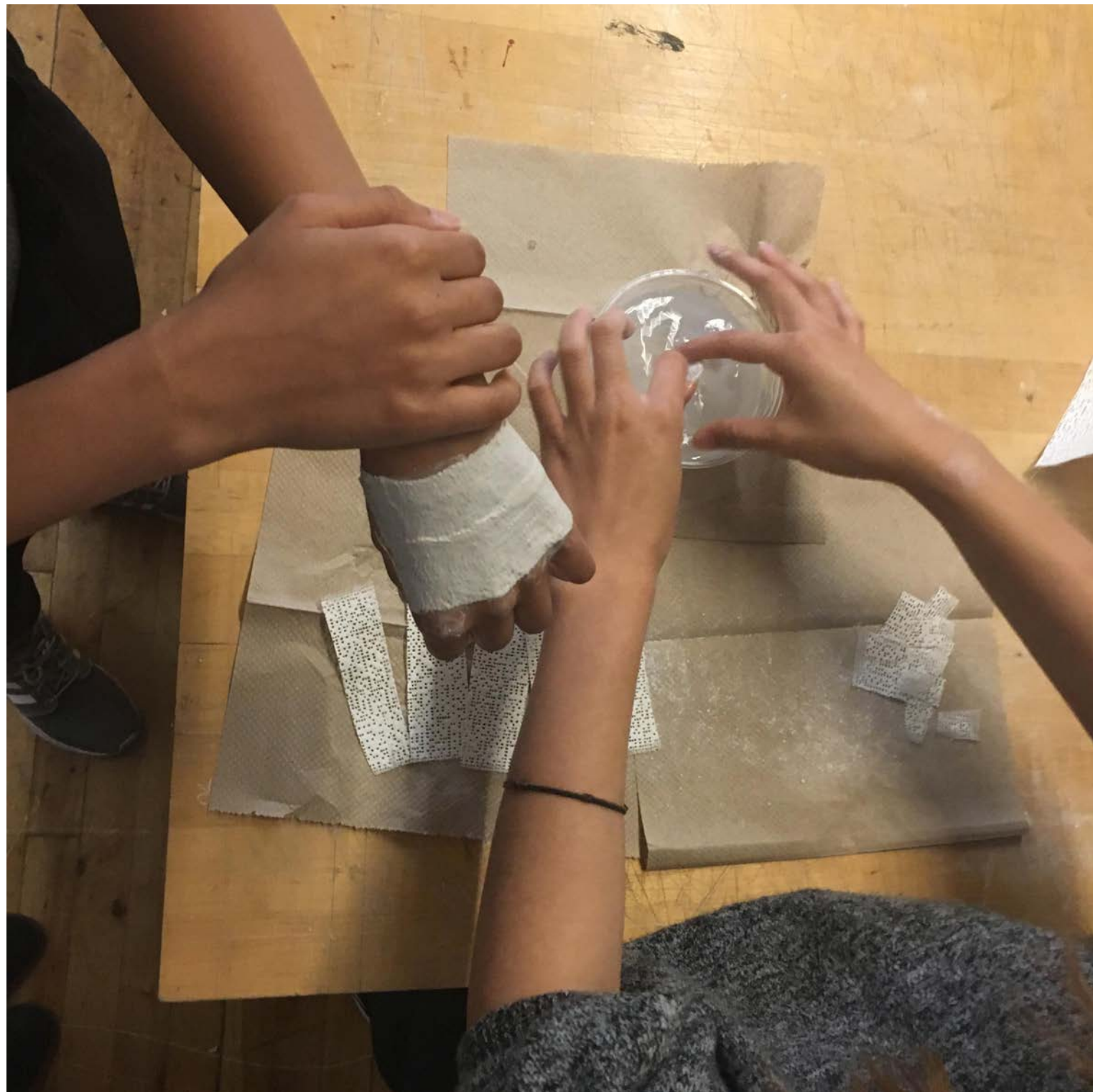


## Body & Perception : Casting

---







Dipping strips and applying



Molding accurately between fingers









Front view



Side view



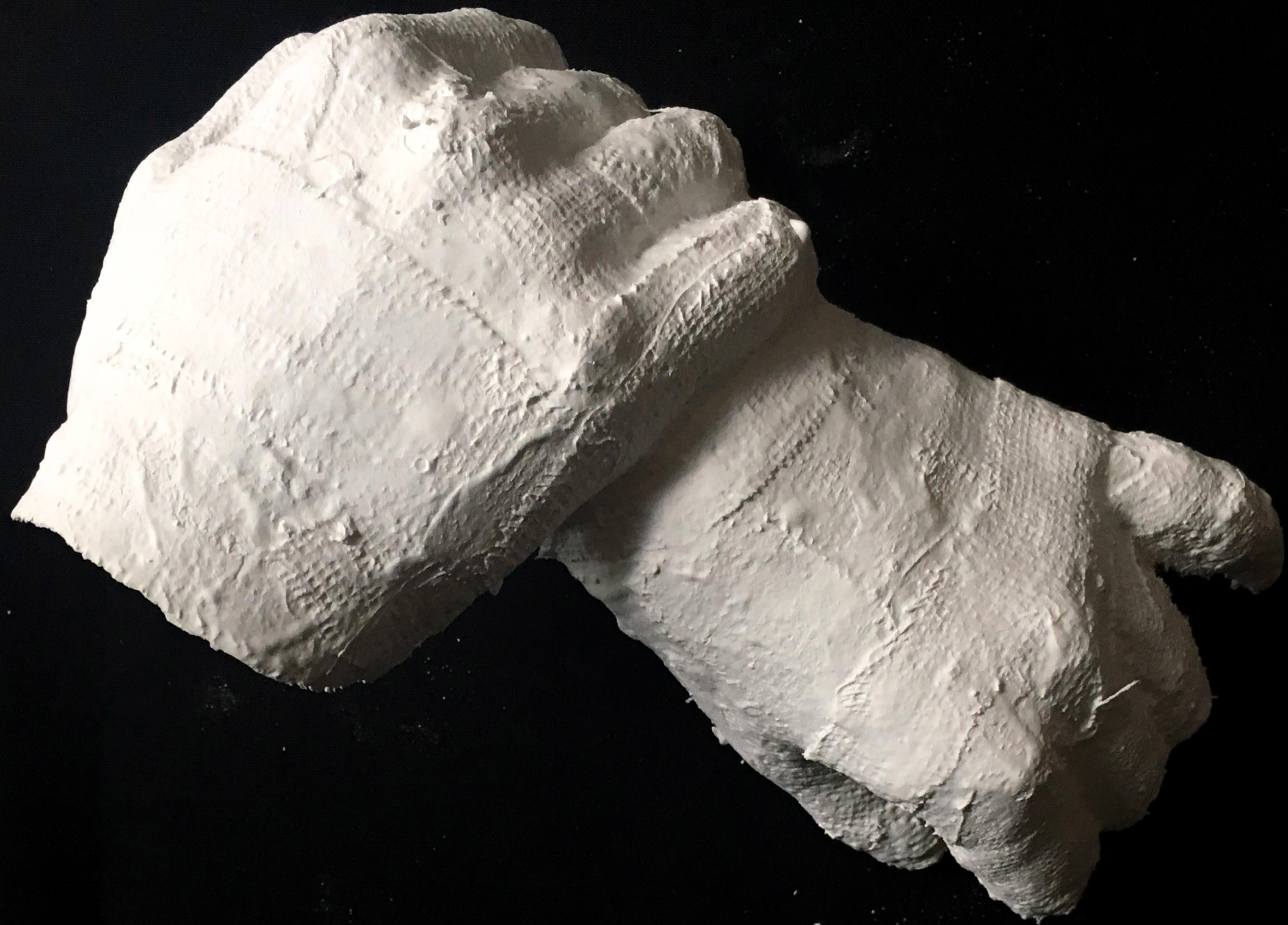


Removal of hands



Underside











































## Clothing & Identity : Making

---







Pinch for half of crease

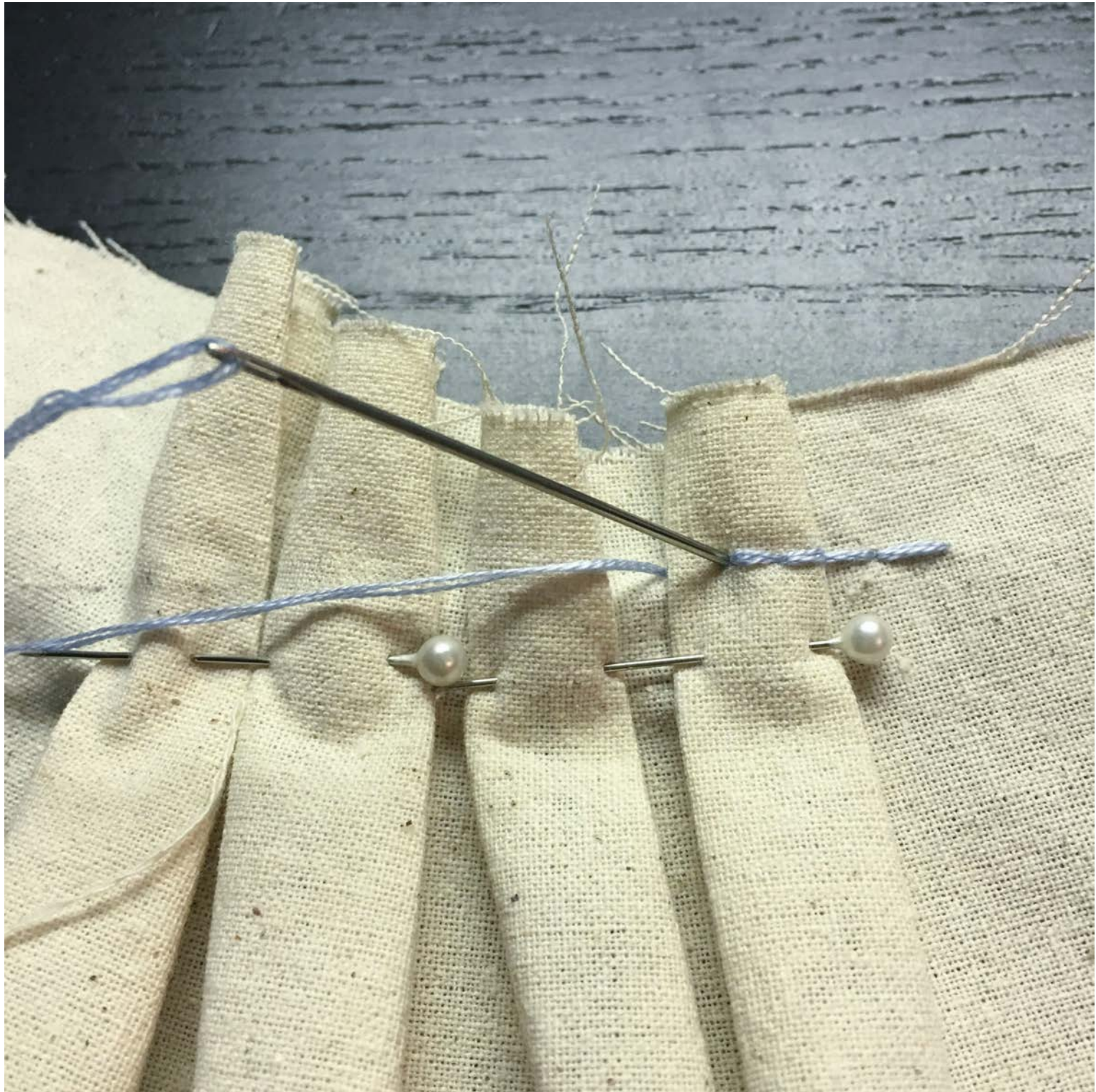


Pinch in opposite direction to complete crease. Pin down





Back stitching technique. Start from underneath



Pull over and back into the previous stitch





Pin down



Trim extra width













Bunch at two points



Pin down





Back stitch all the way across



Close-up





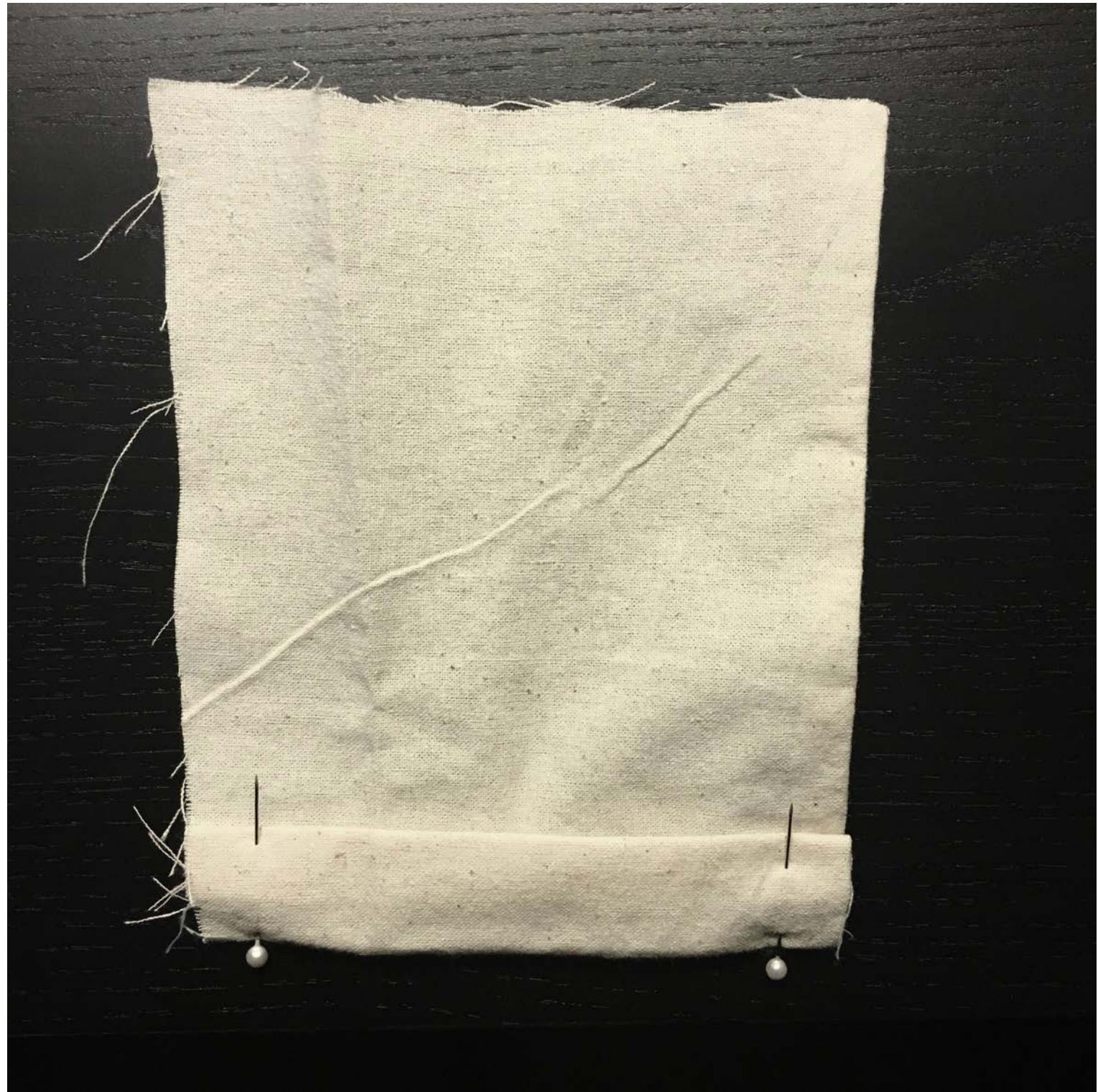






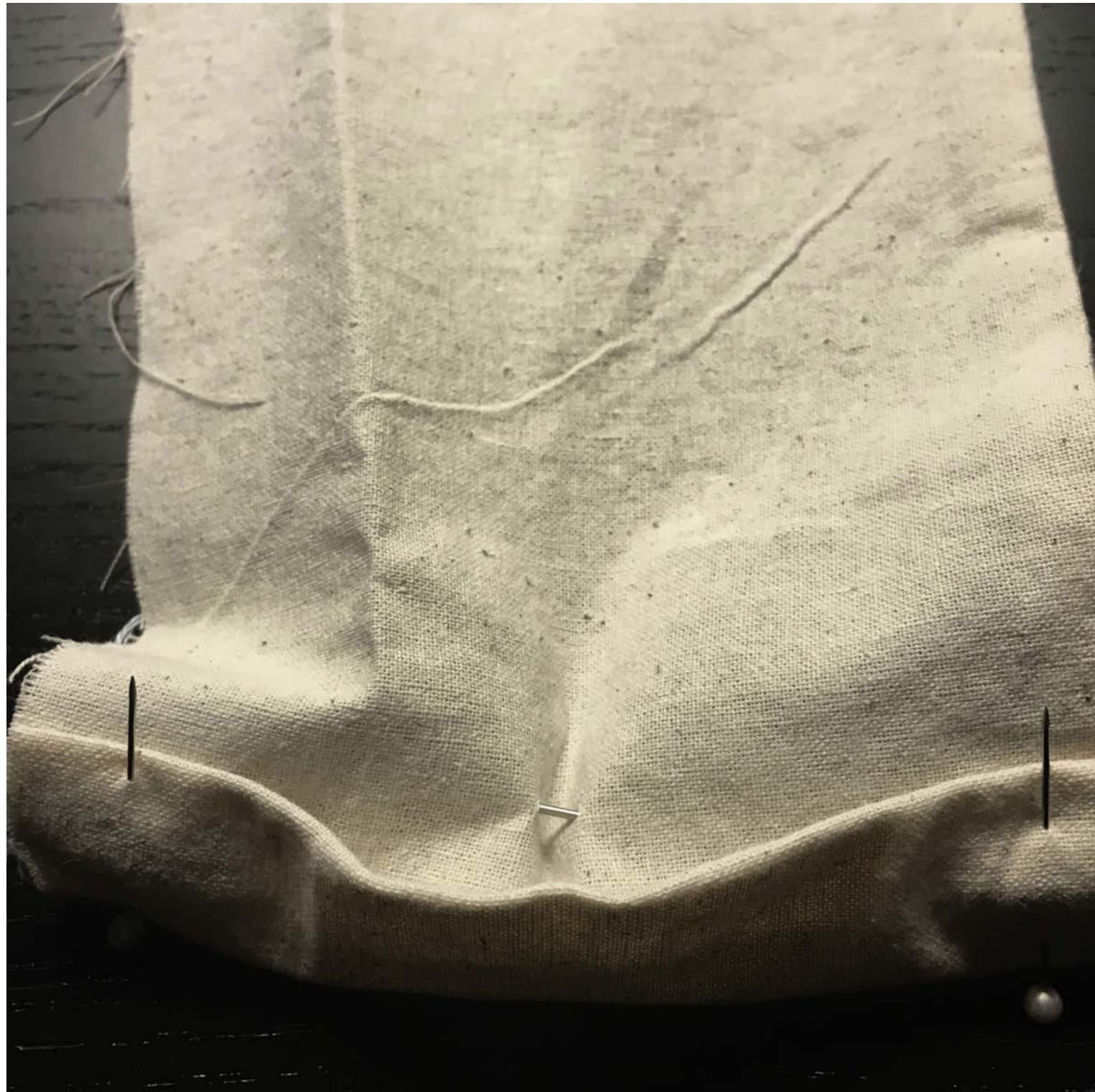


Fold (sleeve cuff)

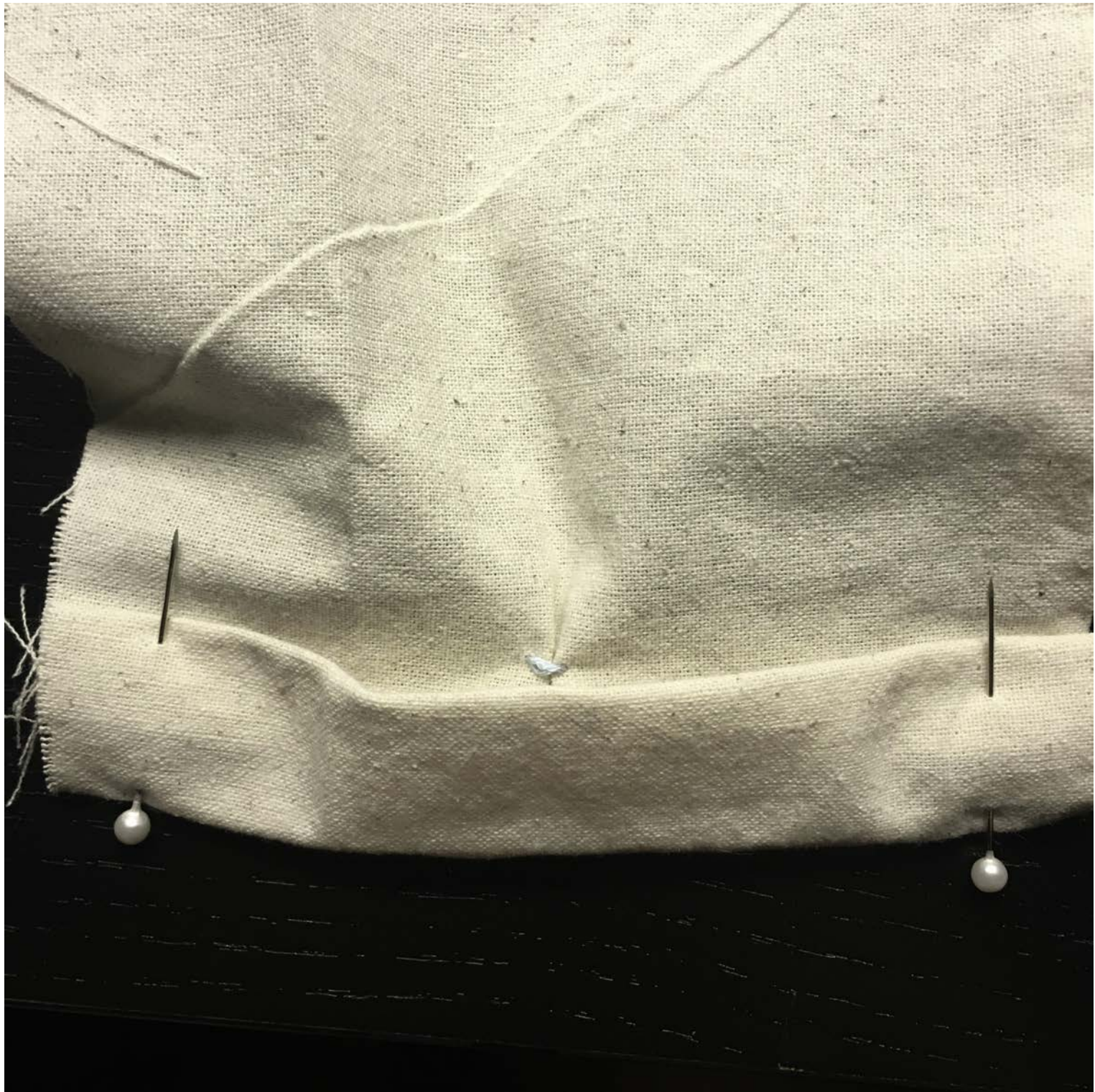


Pin down

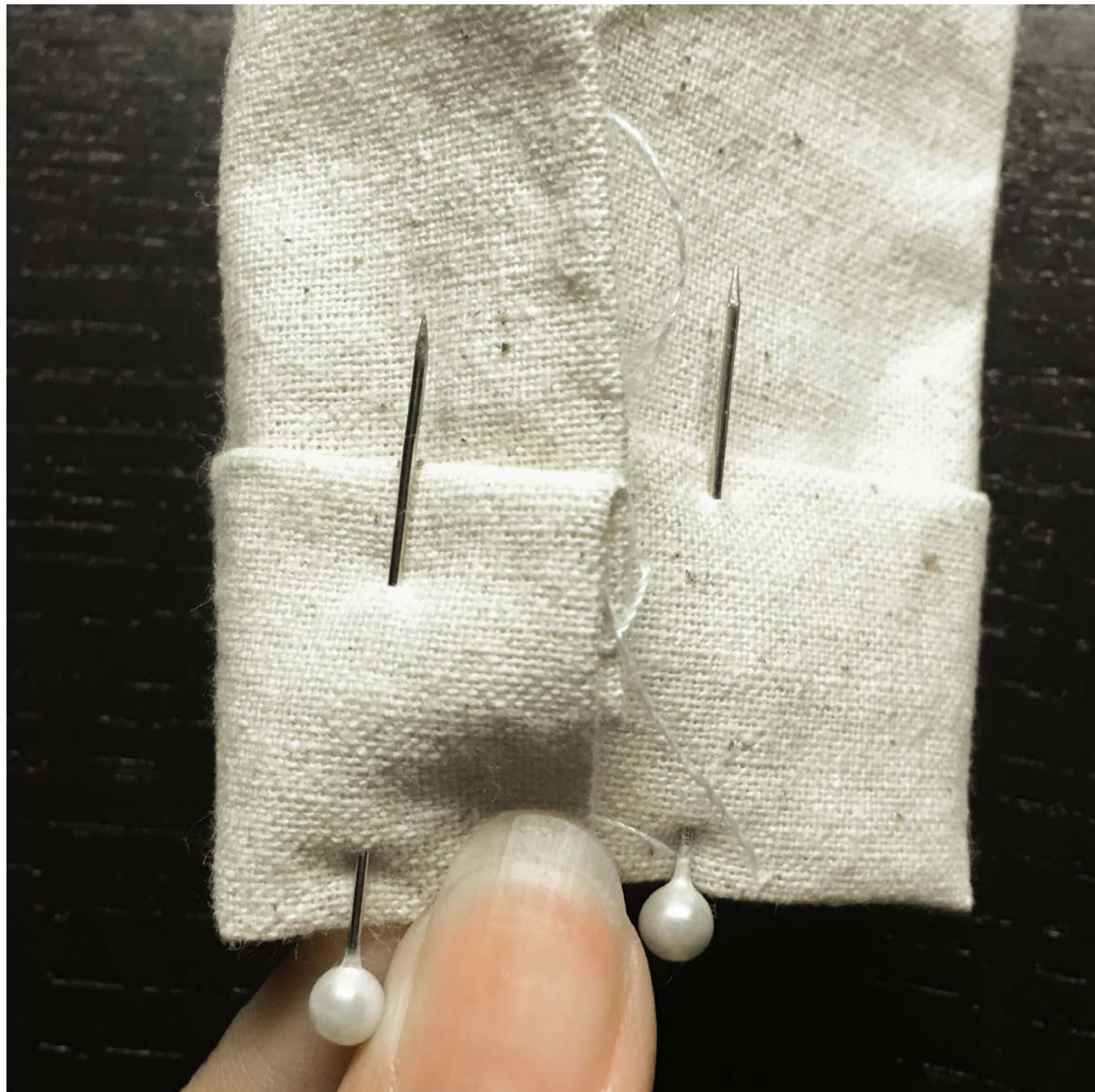




Pinch







Stitch





